



SNOWY MOUNTAIN POP-UP CARD

How to by Edge Marquez(@ popp3d)

WHAT YOU NEED:

A pair of scissors or craft knife or any cutting tool that you have. Glue. Any scoring tool.

And to print out the template in cardstock or any paper thicker than normal copier paper(at least 160gsm)

CUT AROUND   OR 
CUT  CUT SHAPE OUT 



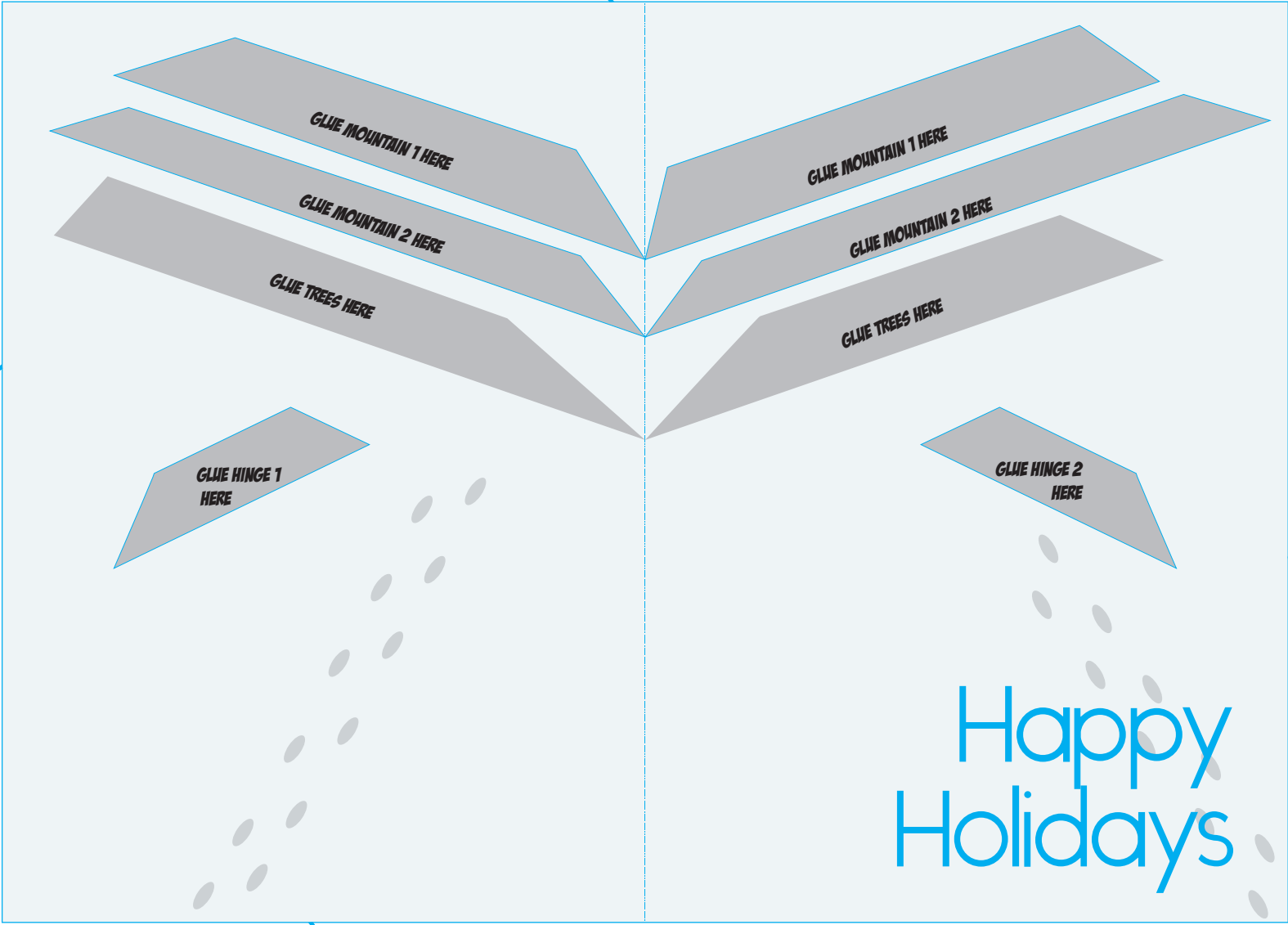
VALLEY FOLD



MOUNTAIN FOLD

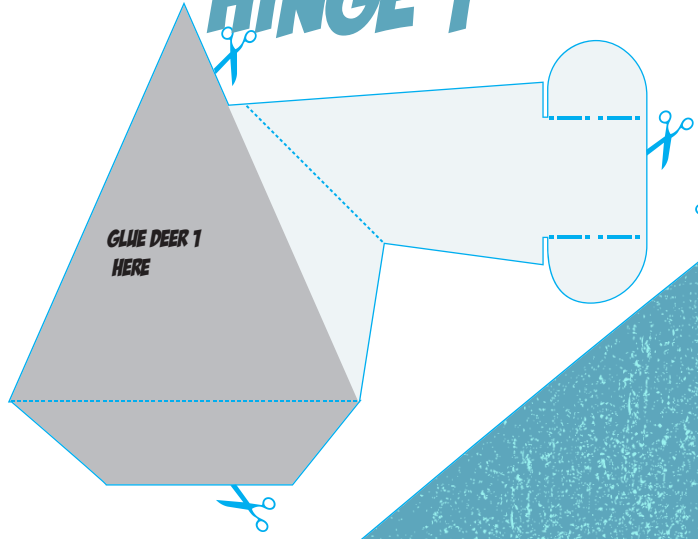


COVER

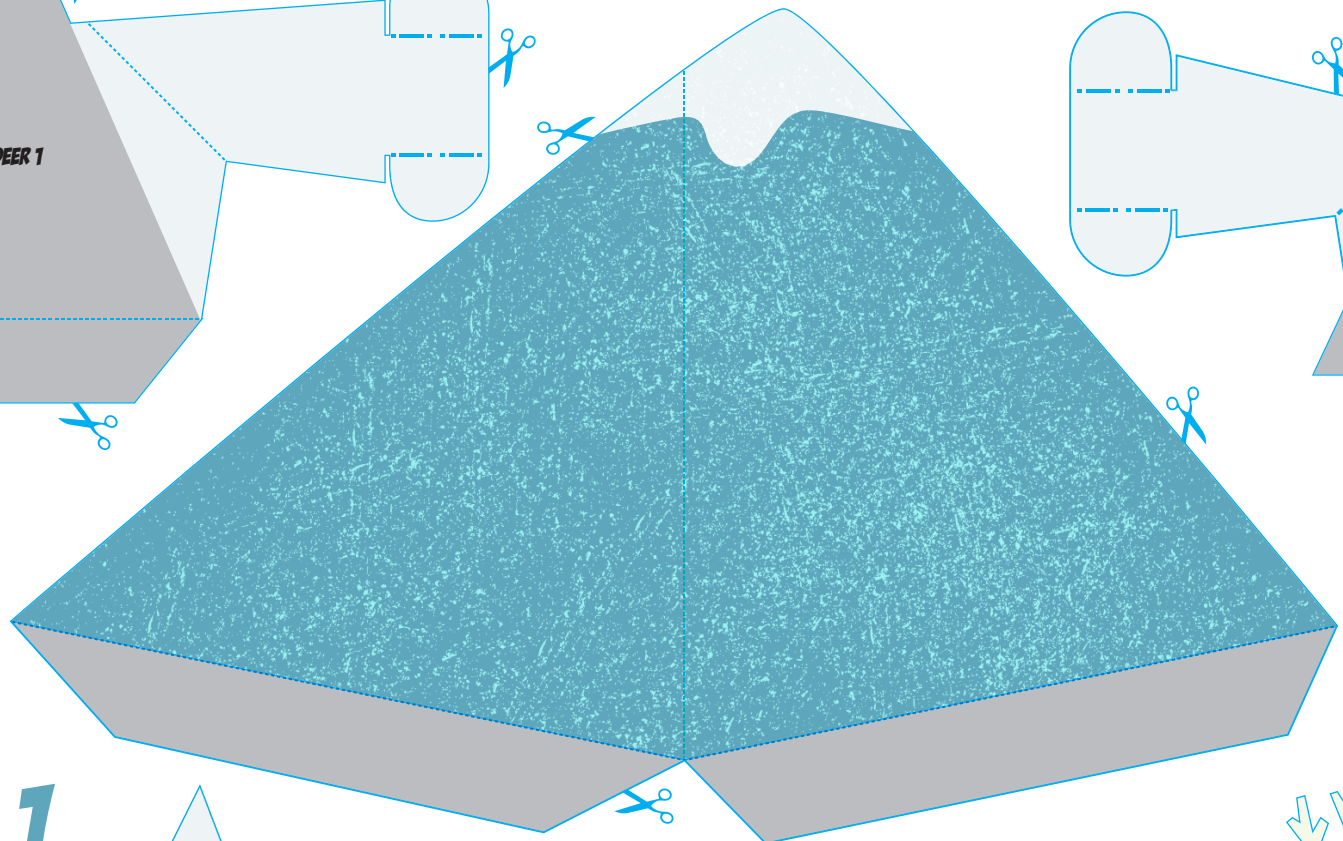
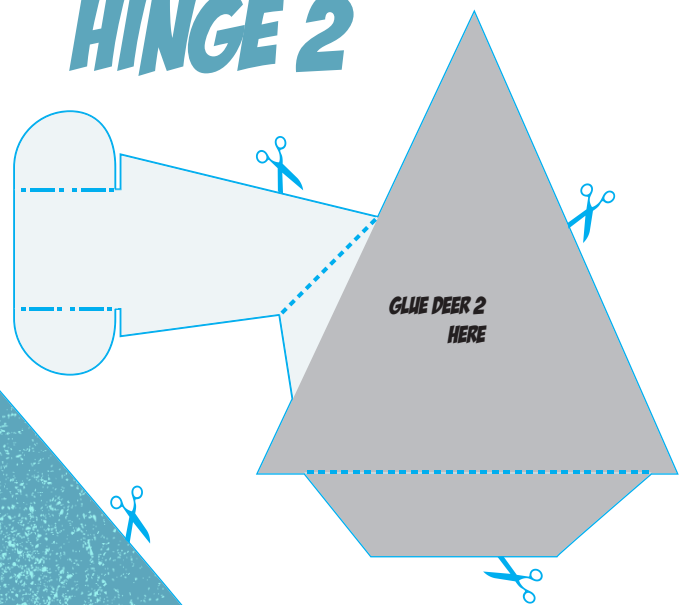


BASE

HINGE 1



HINGE 2



DEER 1

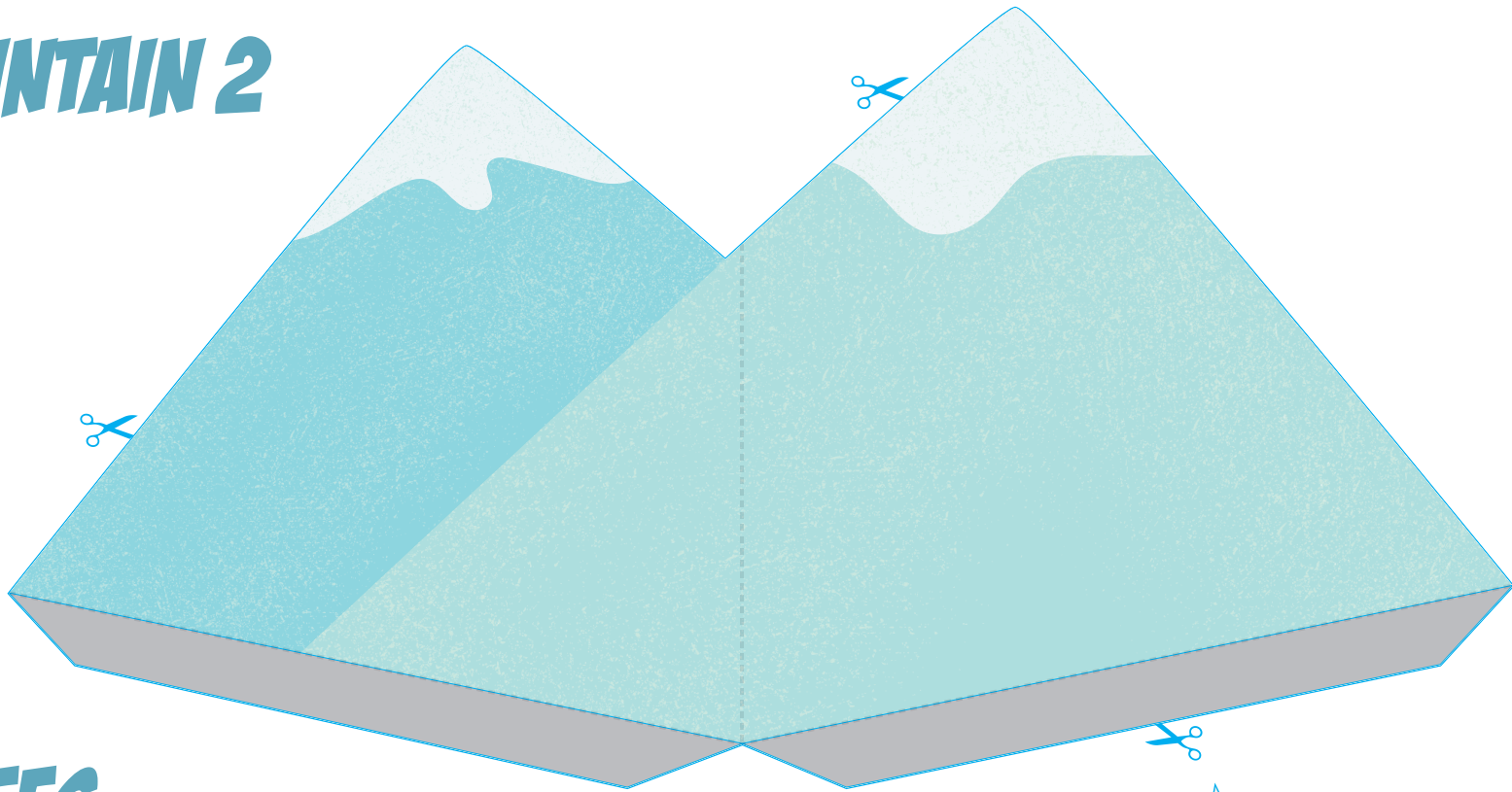


MOUNTAIN 1

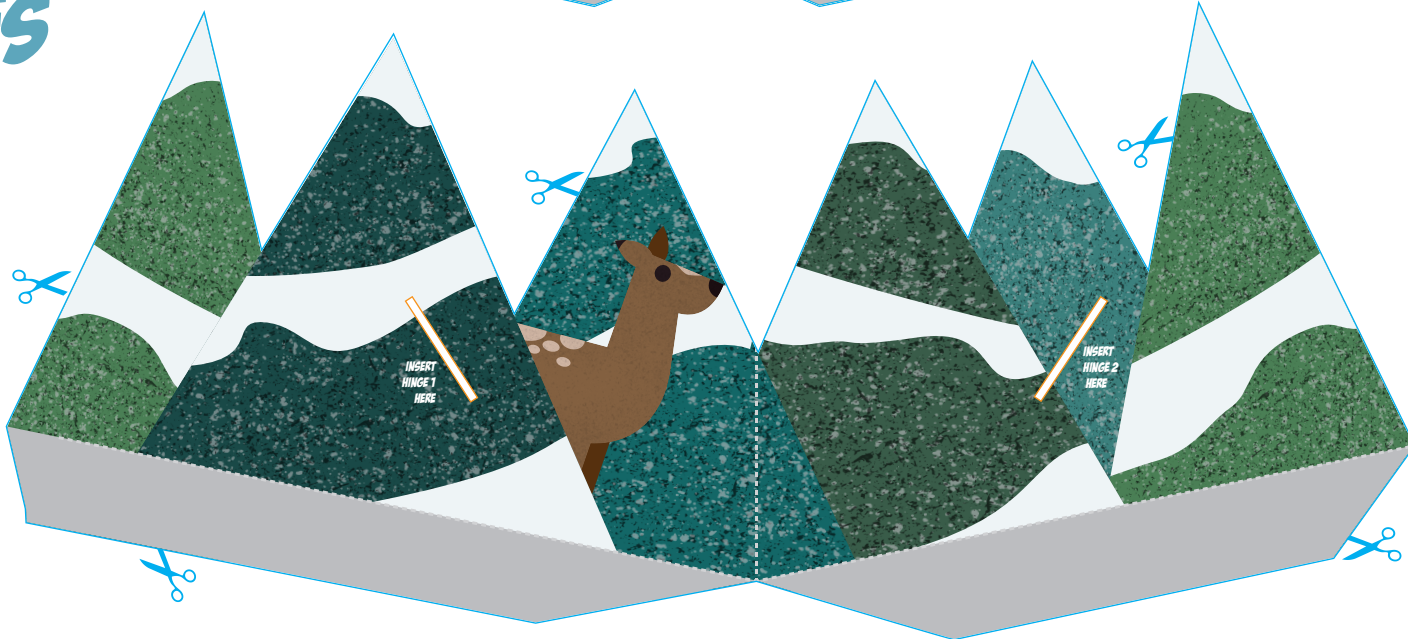
DEER 2



MOUNTAIN 2

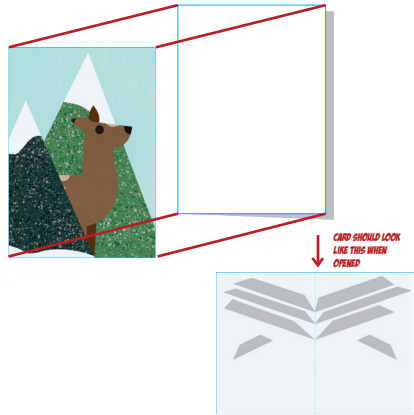


TREES



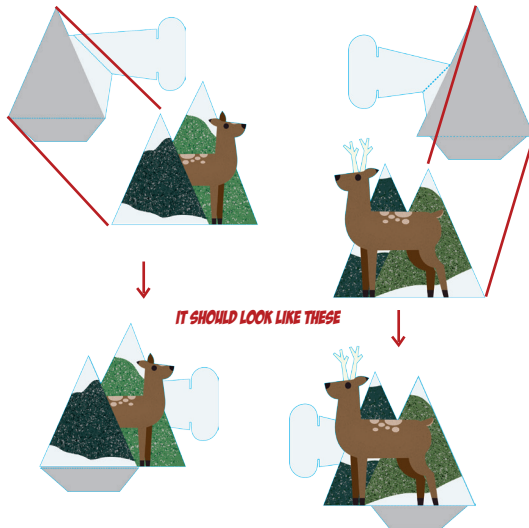
1. FOLD BASE AND GLUE COVER ON TO THE BASE(PRINT INSIDE OF THE FOLD)

MAKE SURE YOU ALIGN EACH CORNER WHILE GLUING



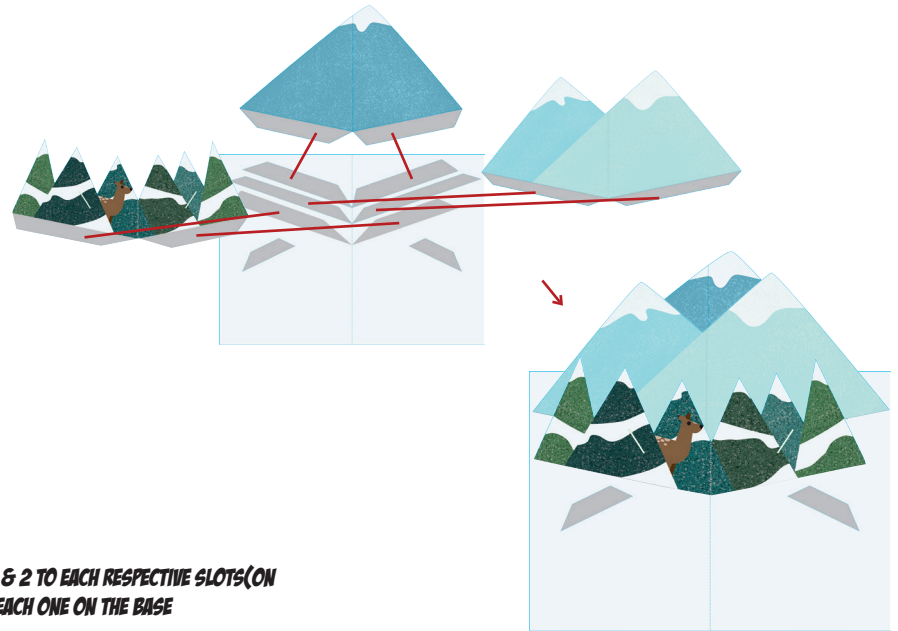
2. GLUE DEER 1 AND DEER 2 TO HINGE 1 AND HINGE 2 RESPECTIVELY

MAKE SURE YOU ALIGN EACH CORNER WHILE GLUING



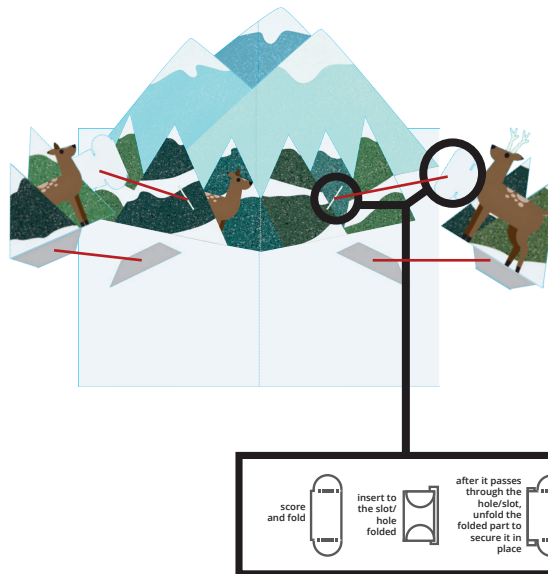
IT SHOULD LOOK LIKE THESE

3. GLUE MOUNTAIN 1, MOUNTAIN 2 AND TREES TO EACH GLUE AREA ON THE BASE



WHAT IT SHOULD LOOK LIKE

4. INSERT HINGE 1 & 2 TO EACH RESPECTIVE SLOTS(ON TREES) AND GLUE EACH ONE ON THE BASE



WHAT IT SHOULD LOOK LIKE