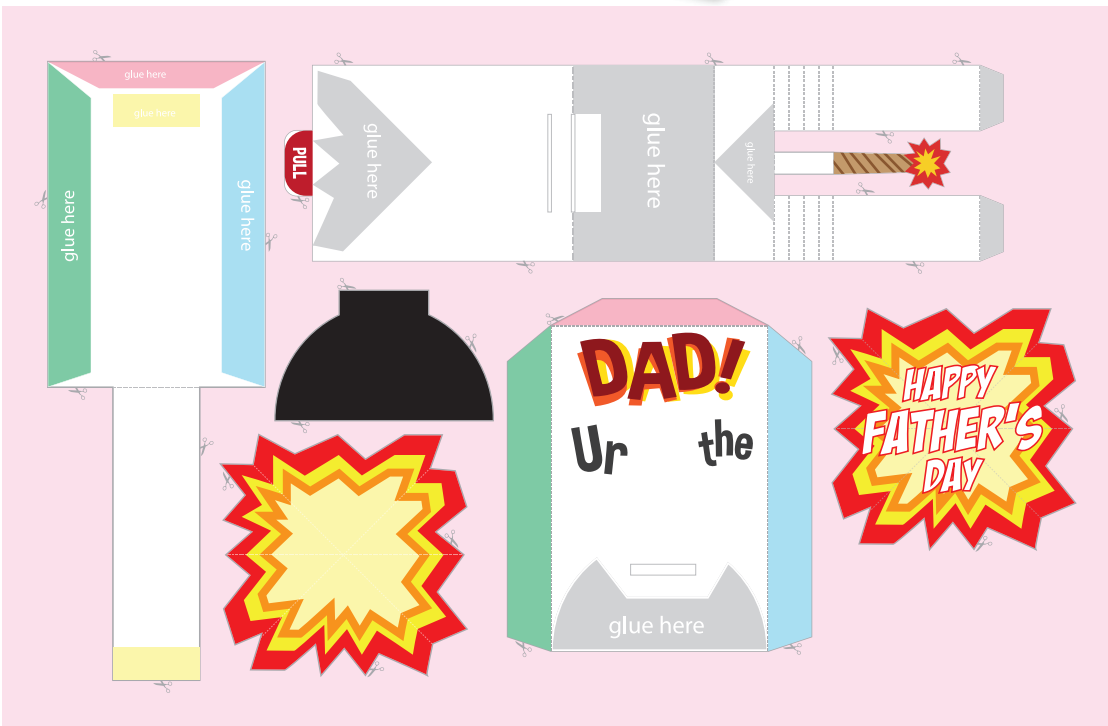


UR THE BOMB POP-UP CARD

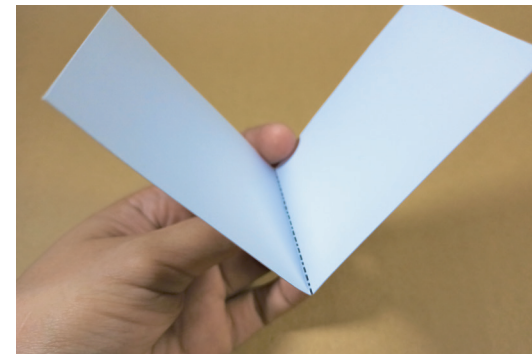
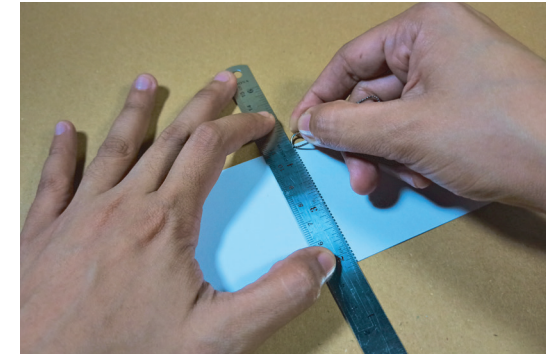


Carefully cut out the pop-up pieces for this card following the solid lines with scissor icons. Score and fold according to the guide on the template.

LEGEND

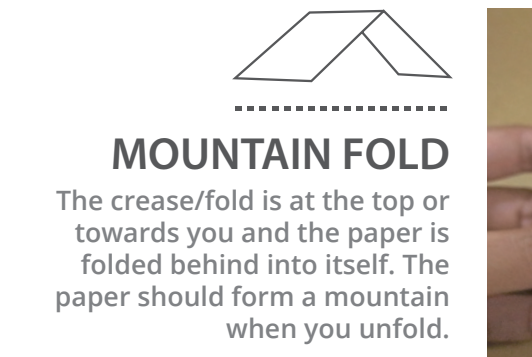
SCORE

Paper score is a ridge that is indented into the paper where the fold line will occur. Use a ballpoint pen that has run out of ink, ruler or any dull edge that won't cut the paper. Press the ruler(or any dull edge used) down firmly at the place you want to fold.



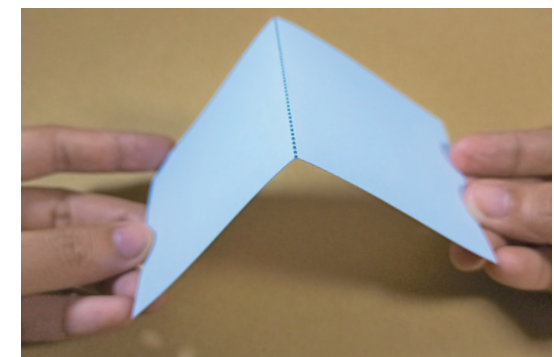
VALLEY FOLD

The crease/fold is at the bottom or away from you and the paper is folded forward into itself. The paper should form a "V" when you unfold.



MOUNTAIN FOLD

The crease/fold is at the top or towards you and the paper is folded behind into itself. The paper should form a mountain when you unfold.



CUT OUT

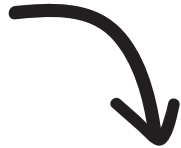


OR





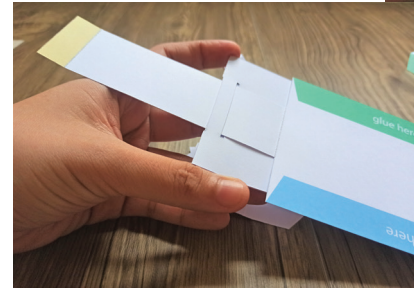
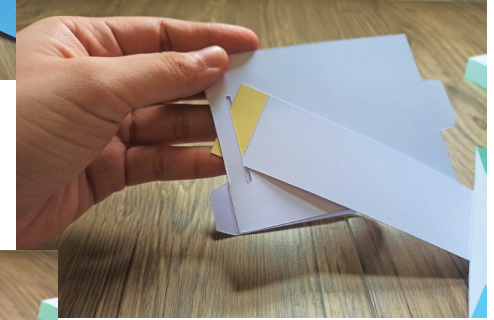
1. GLUE THIS TO ITSELF



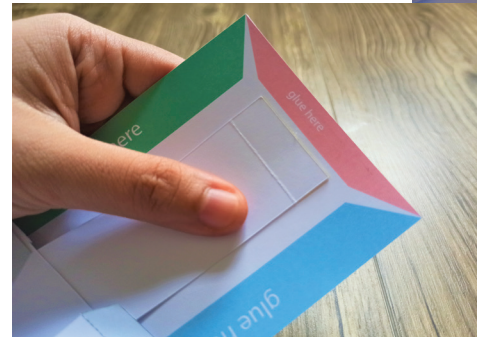
IT SHOULD LOOK LIKE THIS

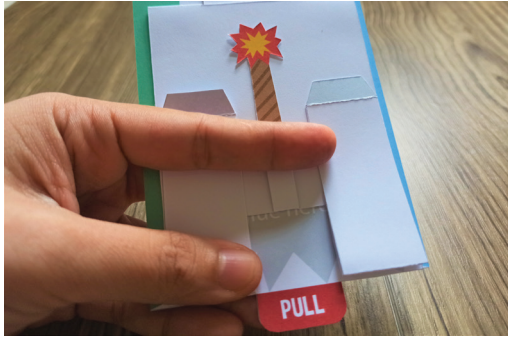


2. GET THIS PIECE AND INSERT IT TO THE BACK OF THE PREVIOUS PIECE



3. GLUE THE FLAP BY FOLDING IT AND GLUING THE YELLOW PART TO THE CORRESPONDING COLOR

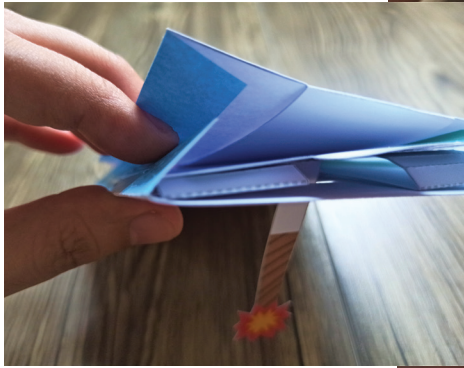




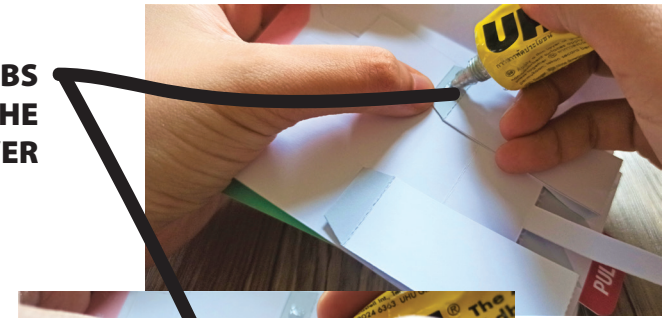
FRONT OF THE ATTACHED PIECE SHOULD LOOK LIKE THIS



4. GLUE ONE OF THE SIDES TO ITS CORRESPONDING COLOR



5. GLUE THESE TABS TO THE BACKSIDE OF THE COVER

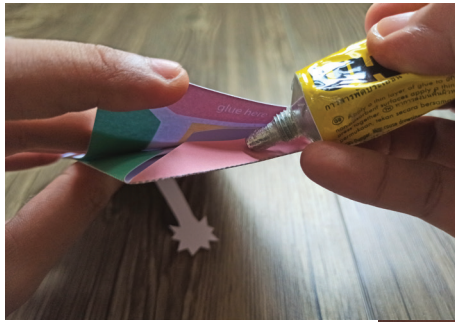


6. INSERT THE WICK OF THE BOMB INTO THE HOLE

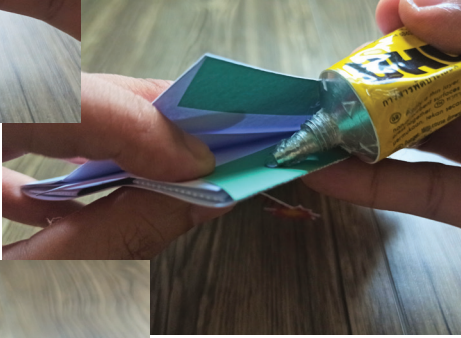


MAKE SURE TO ALIGN THE EDGES BEFORE GLUING





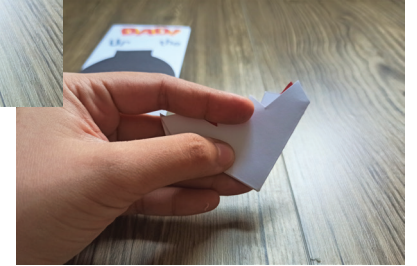
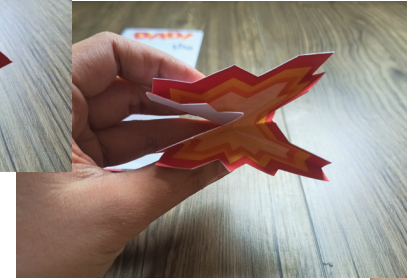
7. GLUE THE OTHER SIDES TO THE CORRESPONDING COLOR



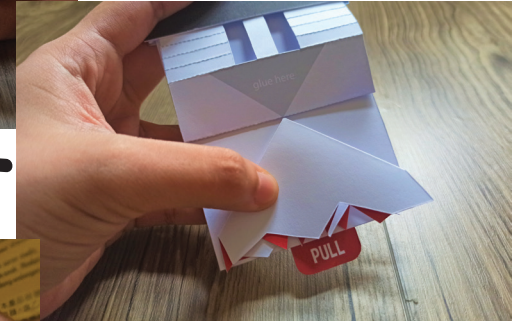
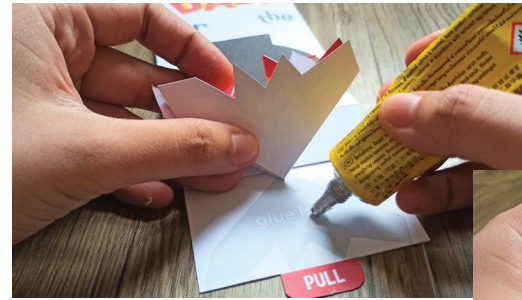
8. GLUE THE BOMB TO THE GREY AREA IN THE COVER



9. FOLD THIS

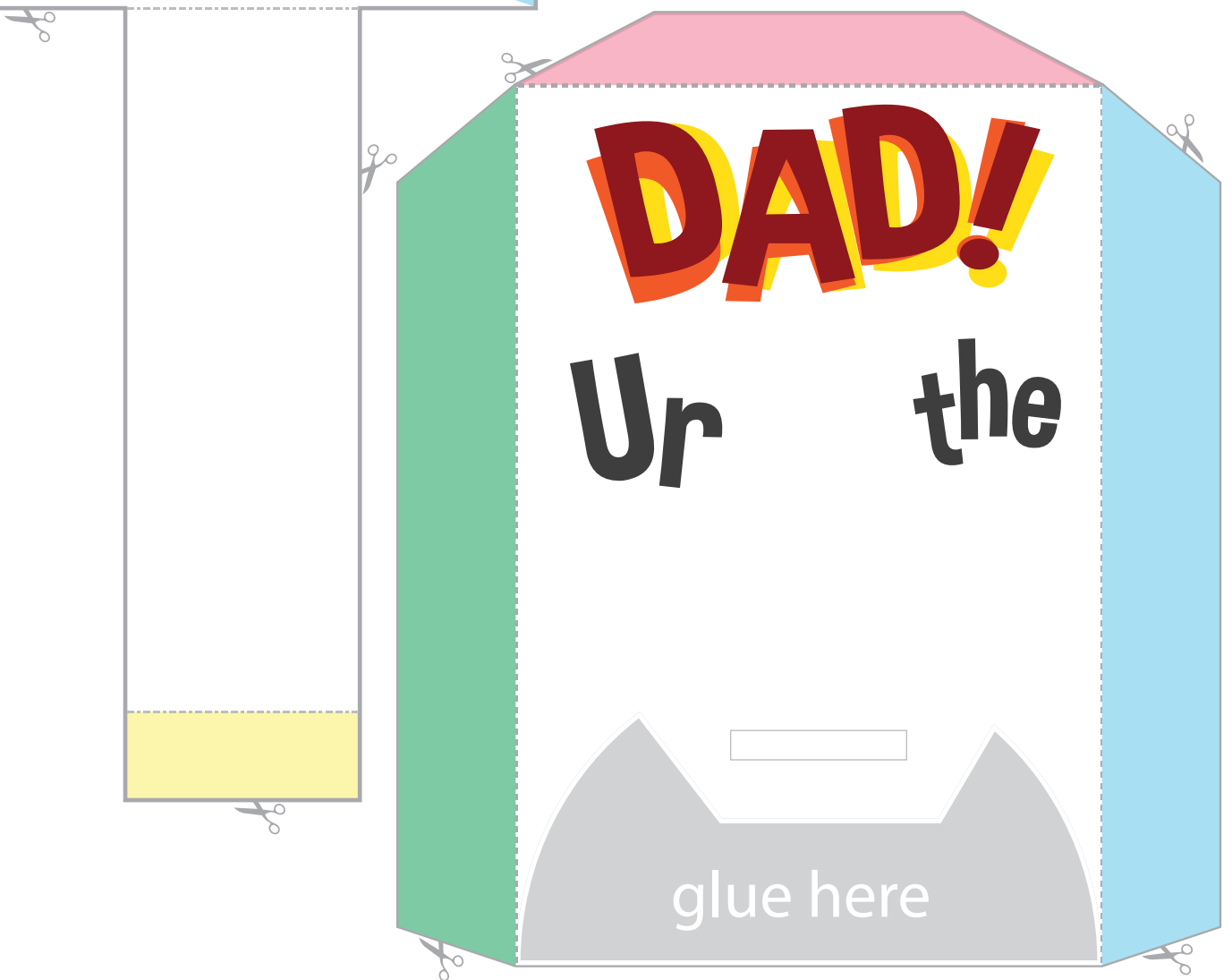
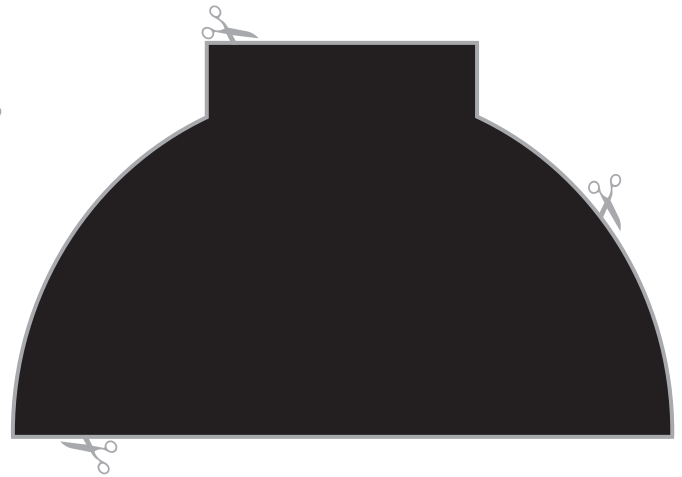
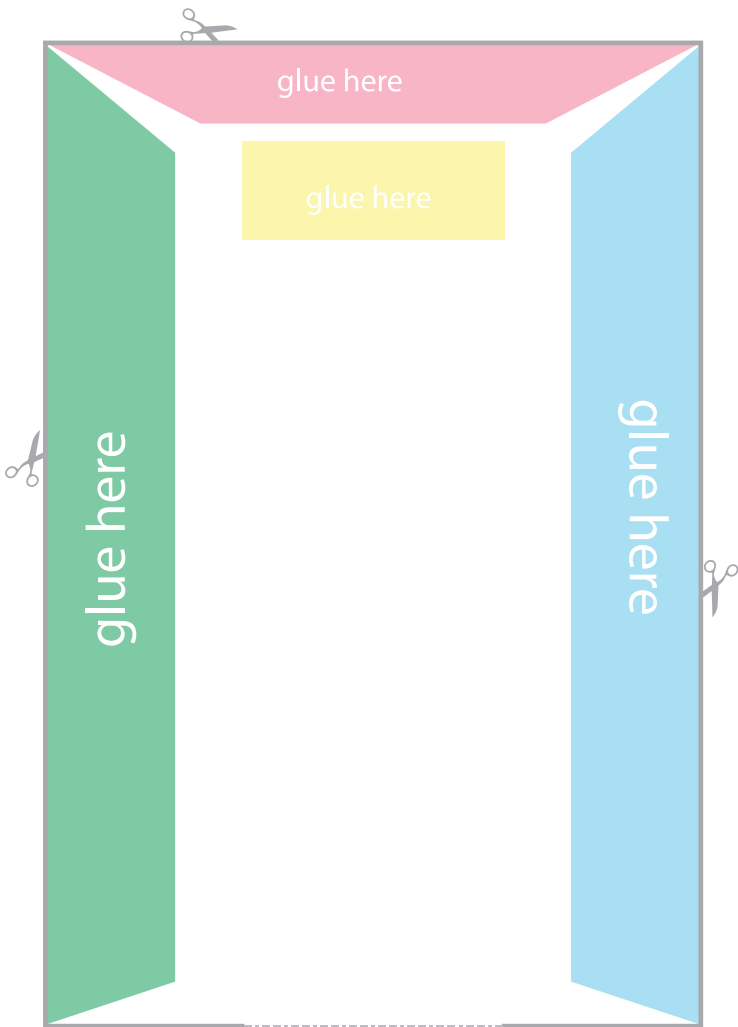


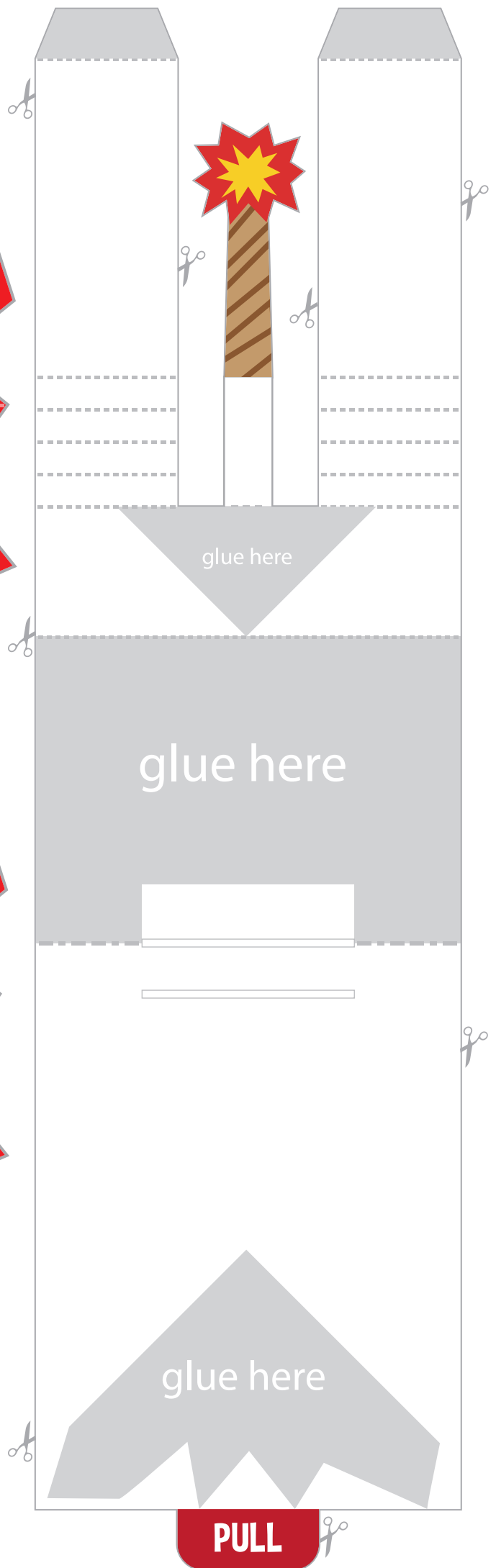
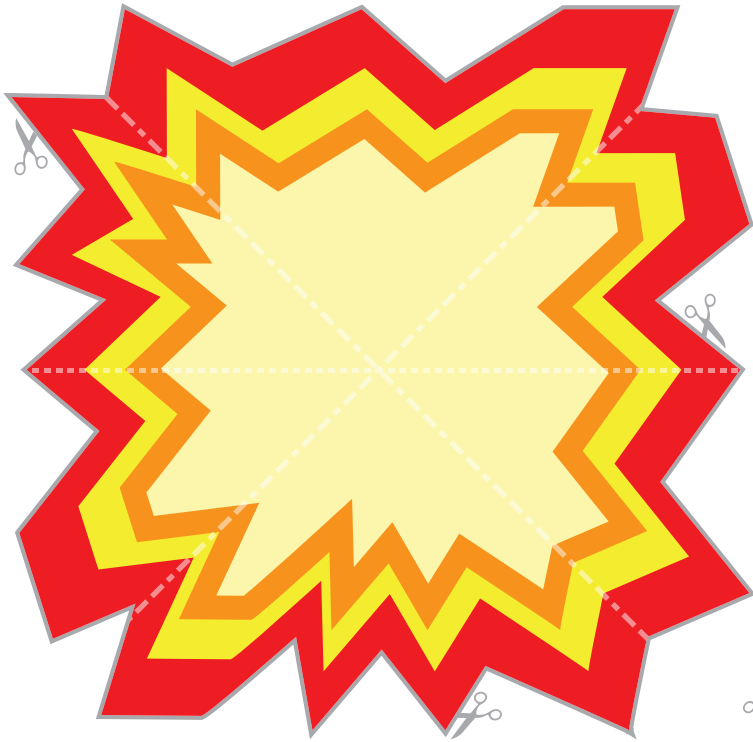
10. THEN GLUE IT TO THE SAME SHAPE



THIS IS HOW IT SHOULD LOOK LIKE







glue here

glue here

glue here

PULL