



SKY'S THE LIMIT POP-UP CARD

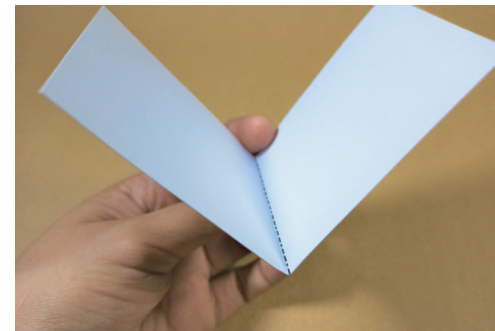
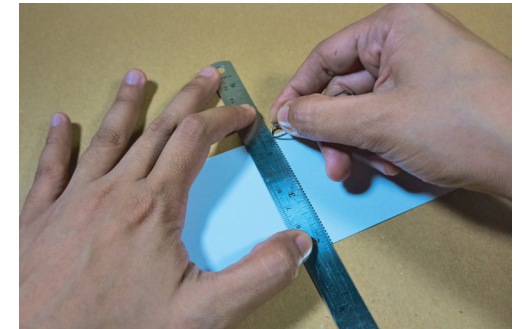


Carefully cut out the pop-up pieces following the solid lines with scissor icons. Score and fold according to the guide on the template.

LEGEND

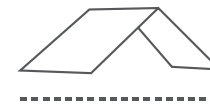
SCORE

Paper score is a ridge that is indented into the paper where the fold line will occur. Use a ballpoint pen that has run out of ink, ruler or any dull edge that won't cut the paper. Press the ruler (or any dull edge used) down firmly at the place you want to fold.



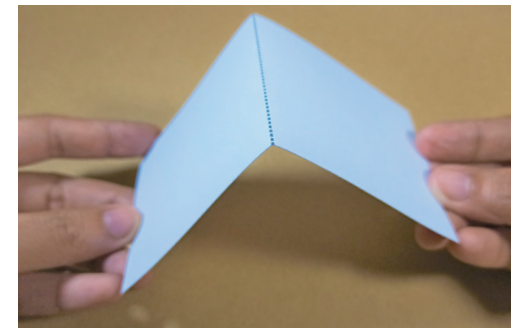
VALLEY FOLD

The crease/fold is at the bottom or away from you and the paper is folded forward into itself. The paper should form a "V" when you unfold.



MOUNTAIN FOLD

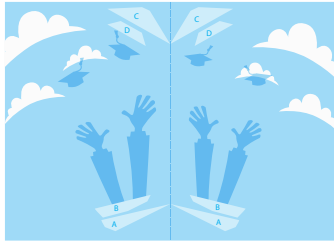
The crease/fold is at the top or towards you and the paper is folded behind into itself. The paper should form a mountain when you unfold.



CUT OUT



1) FOLD THE BASE INWARD. SO THAT THE PRINTED PART IS INSIDE OF THE CARD



BASE

2) GET THE COVER AND GLUE IT TO THE BASE WHILE IT IS CLOSE. MAKE SURE TO ALIGN THE CORNERS AS YOU GLUE THEM TOGETHER.



BASE



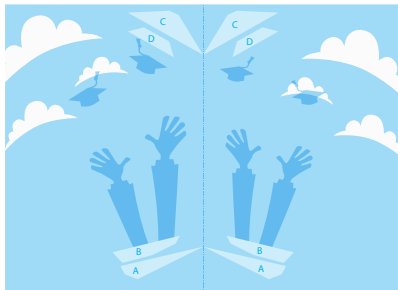
COVER

MAKE SURE TO ALIGN THE CORNERS WHILE GLUING

3) LET THE GLUE DRY



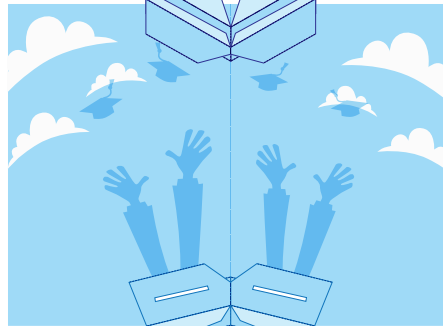
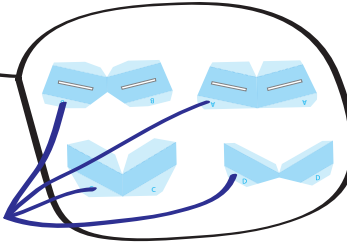
WHAT THE CARD SHOULD LOOK LIKE CLOSED



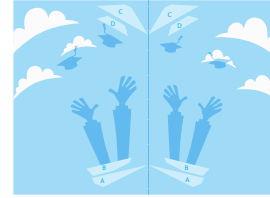
WHAT THE CARD SHOULD LOOK LIKE OPENED

4) ONCE IT'S DRY, OPEN THE CARD AND TAKE THESE PIECES AND GLUE IT TO THE BASE BY GLUING EACH GLUE TABS THE CORRESPONDING LETTER AND ALPHABETICALLY.

glue tabs

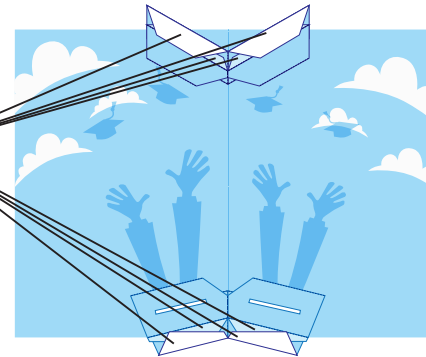


MAKE SURE TO ALIGN THE FOLDS AT THE CENTER OF EACH PIECE WHILE GLUING



BASE

5) GLUE THESE PIECES TOGETHER



6) GLUE THE HATS ON TOP OF THIS



7) INSERT LEFT SIDE AND RIGHT SIDE IN THE HOLES.

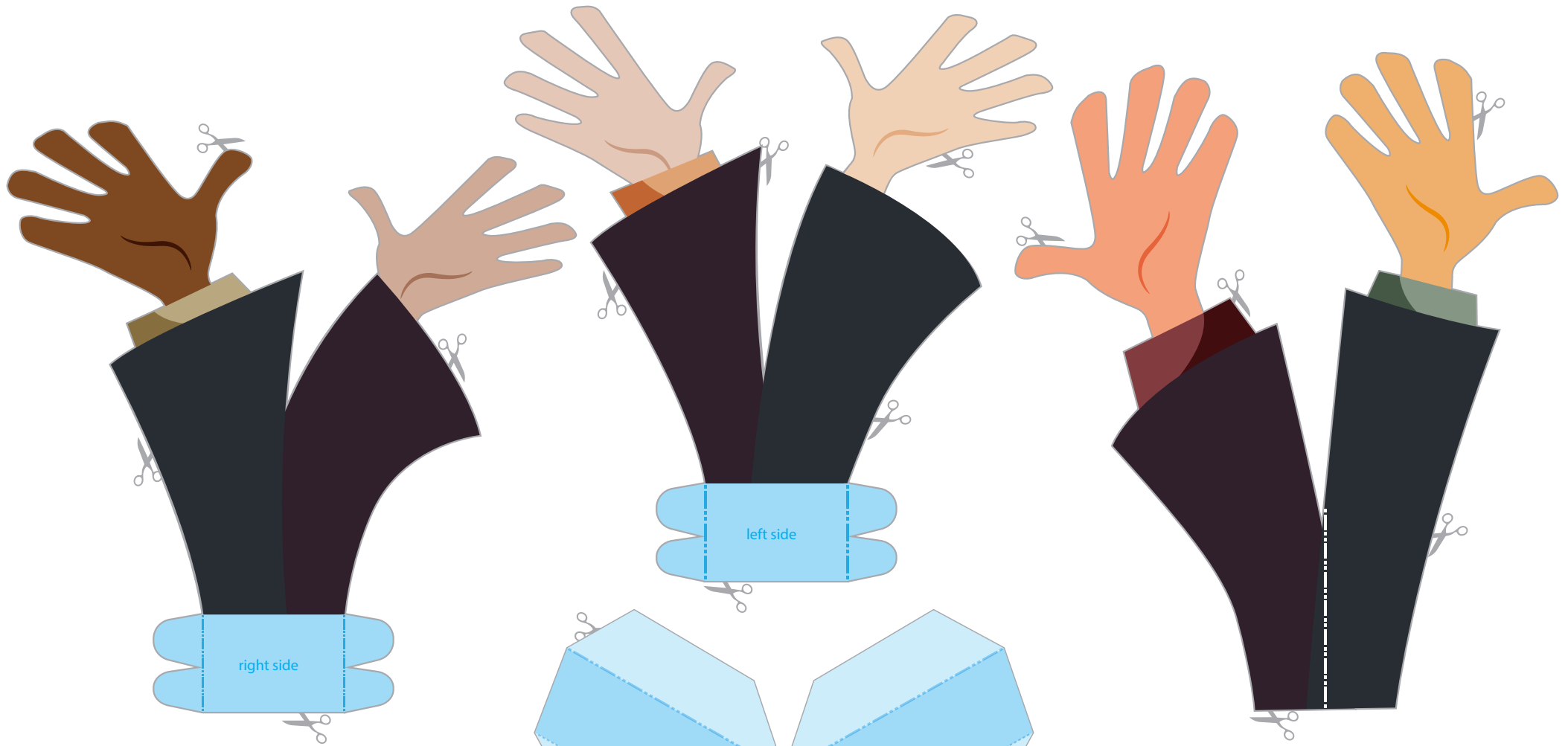


8) GLUE MIDDLE PART ON THE TOP AND MAKE SURE TO ALIGN THE FOLDS ON THE CENTER WHILE GLUING.

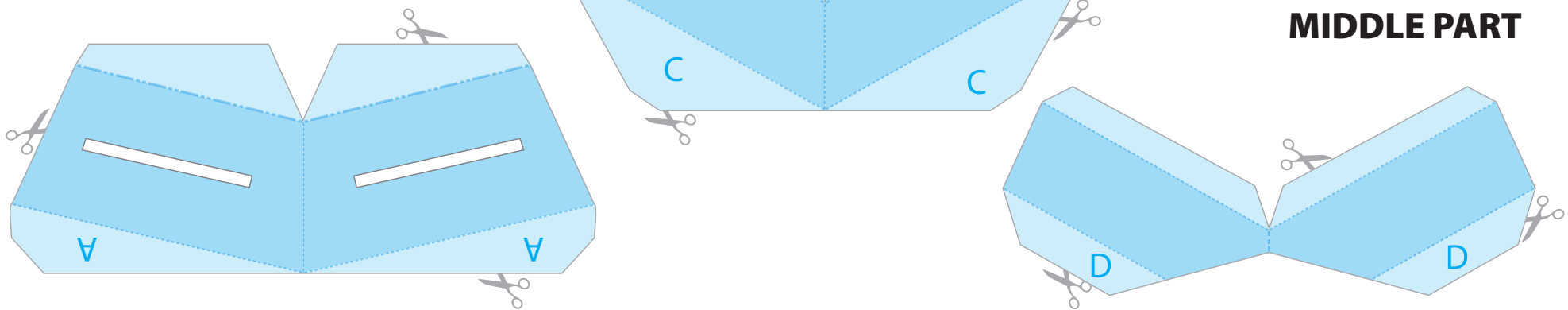


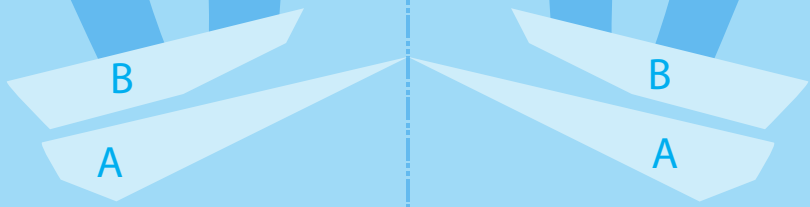
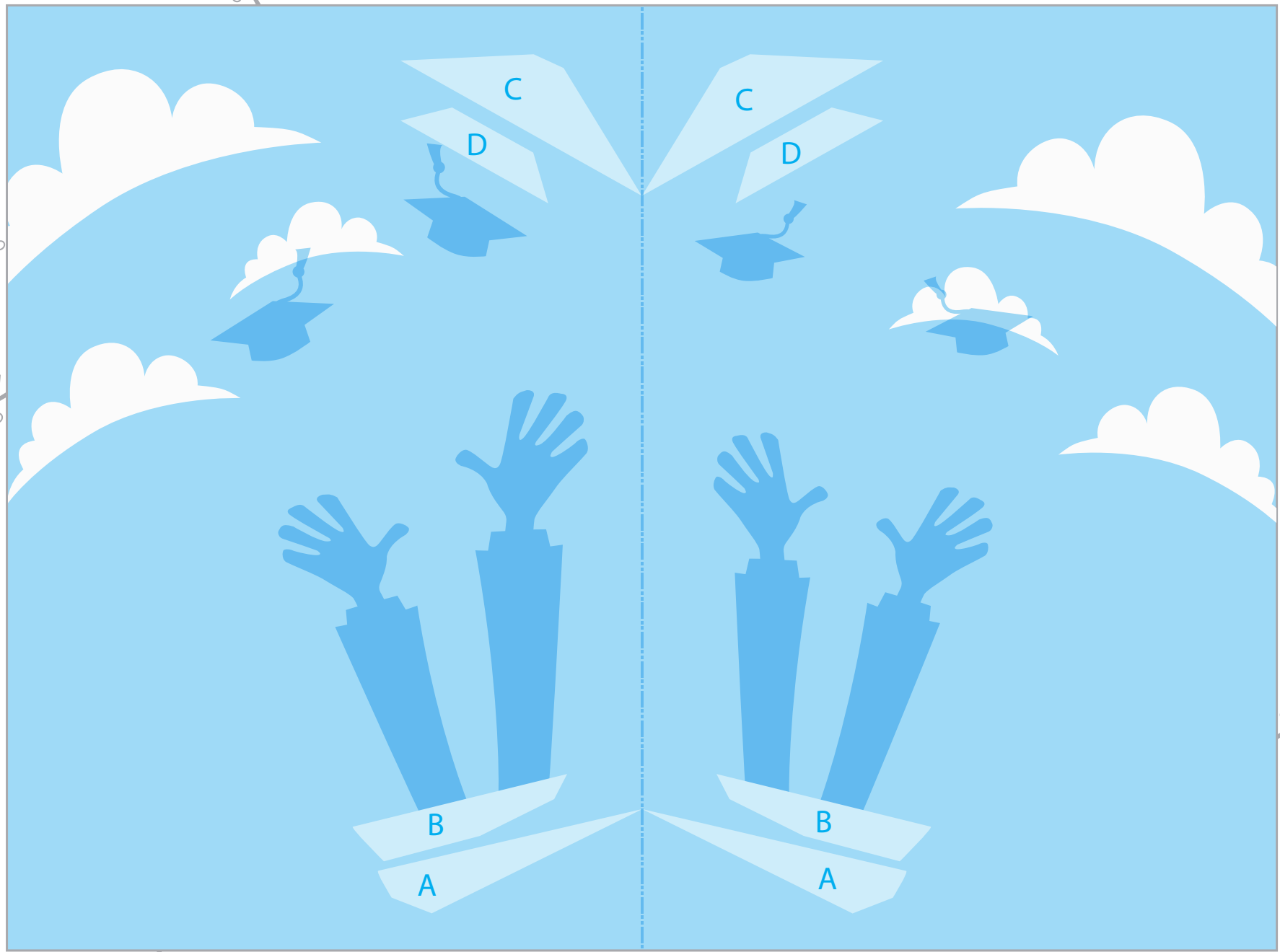
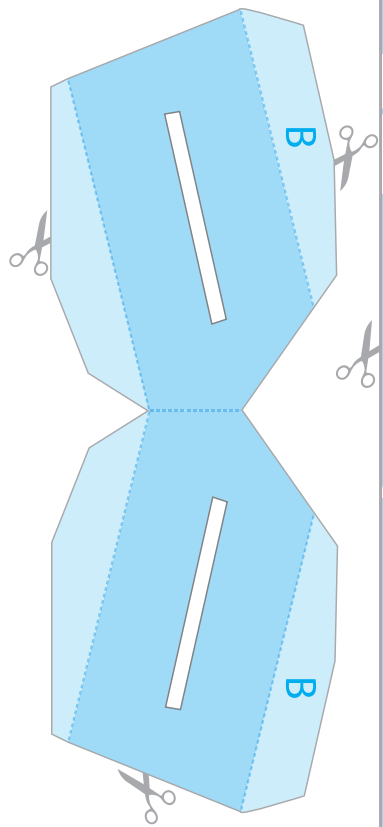
8) GLUE CONGRATULATIONS BANNER ON THE TOP AND MAKE SURE TO ALIGN THE FOLDS ON THE CENTER WHILE GLUING. AND YOU'RE DONE!



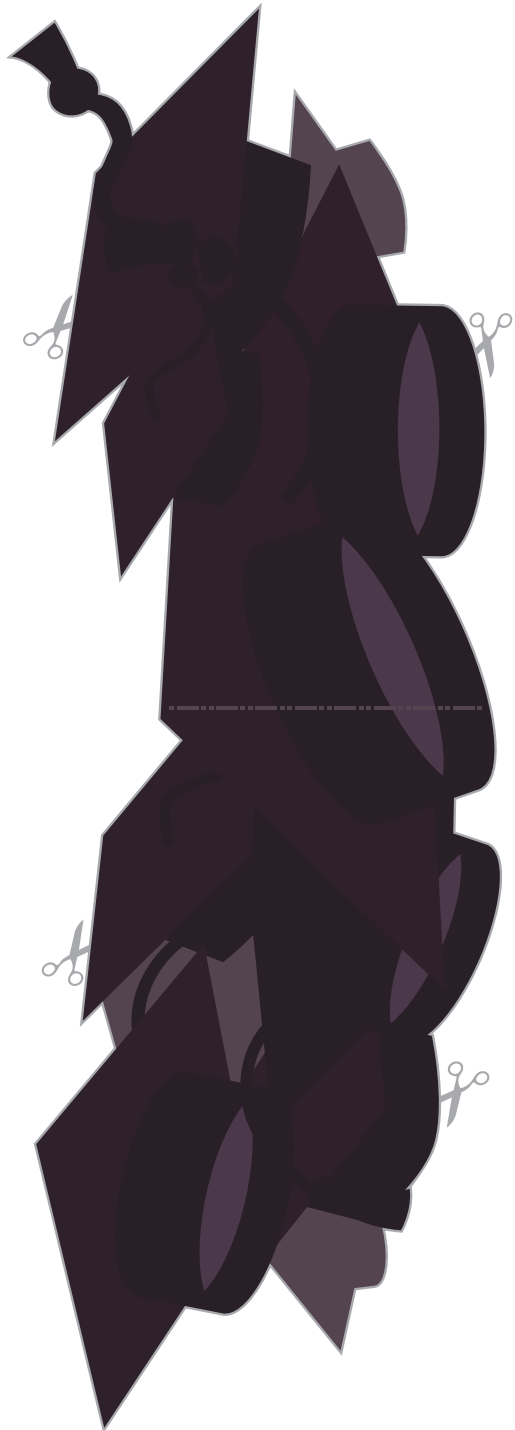


MIDDLE PART





BASE



COVER