



Turkey Pop-Up Card



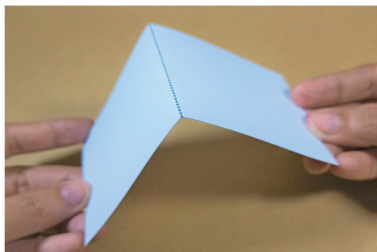
Carefully cut out the pop-up pieces for the turkey pop-up card following the solid lines with scissor icons. Score and fold according to the guide on the template.

* Type of paper to use when printing : Cardstock or paper with thickness of 120gsm to 200gsm



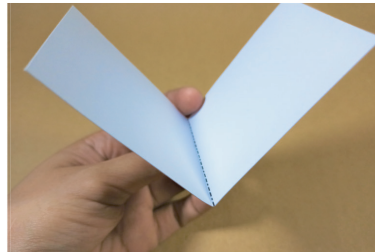
MOUNTAIN FOLD

The crease/fold is at the top or towards you and the paper is folded behind into itself. The paper should form a mountain when you



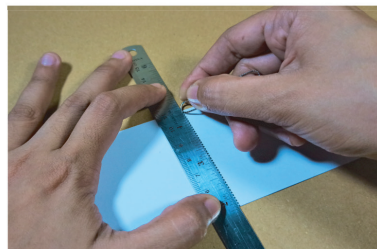
VALLEY FOLD

The crease/fold is at the bottom or away from you and the paper is folded forward into itself. The paper should form a "V" when you



SCORE

Paper score is a ridge that is indented into the paper where the fold line will occur. Use a empty ballpoint pen ruler or any dull edge that won't cut the paper. Press the ruler (or any dull edge used) down firmly at the place you want to fold.



CUT AROUND



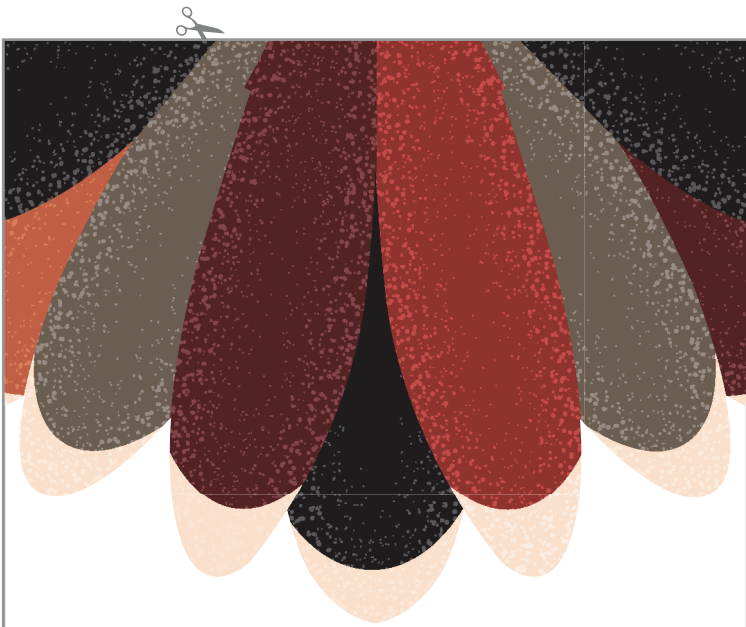
OR



CUT  CUT SHAPE OUT 

TOOL(S) NEEDED:

A pair of scissors or craft knife or any cutting tool that you have. Glue. Any scoring tool.



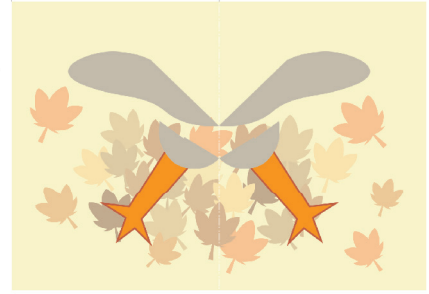
Gobblei
Gobblei

COVER



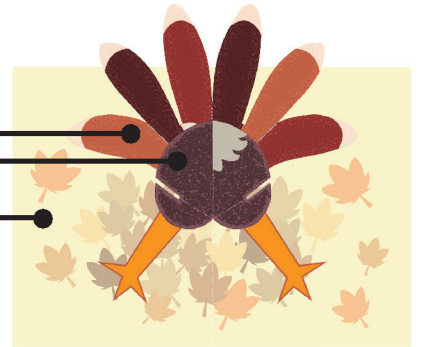
Fold the
COVER
and glue
it to the
BASE

1.

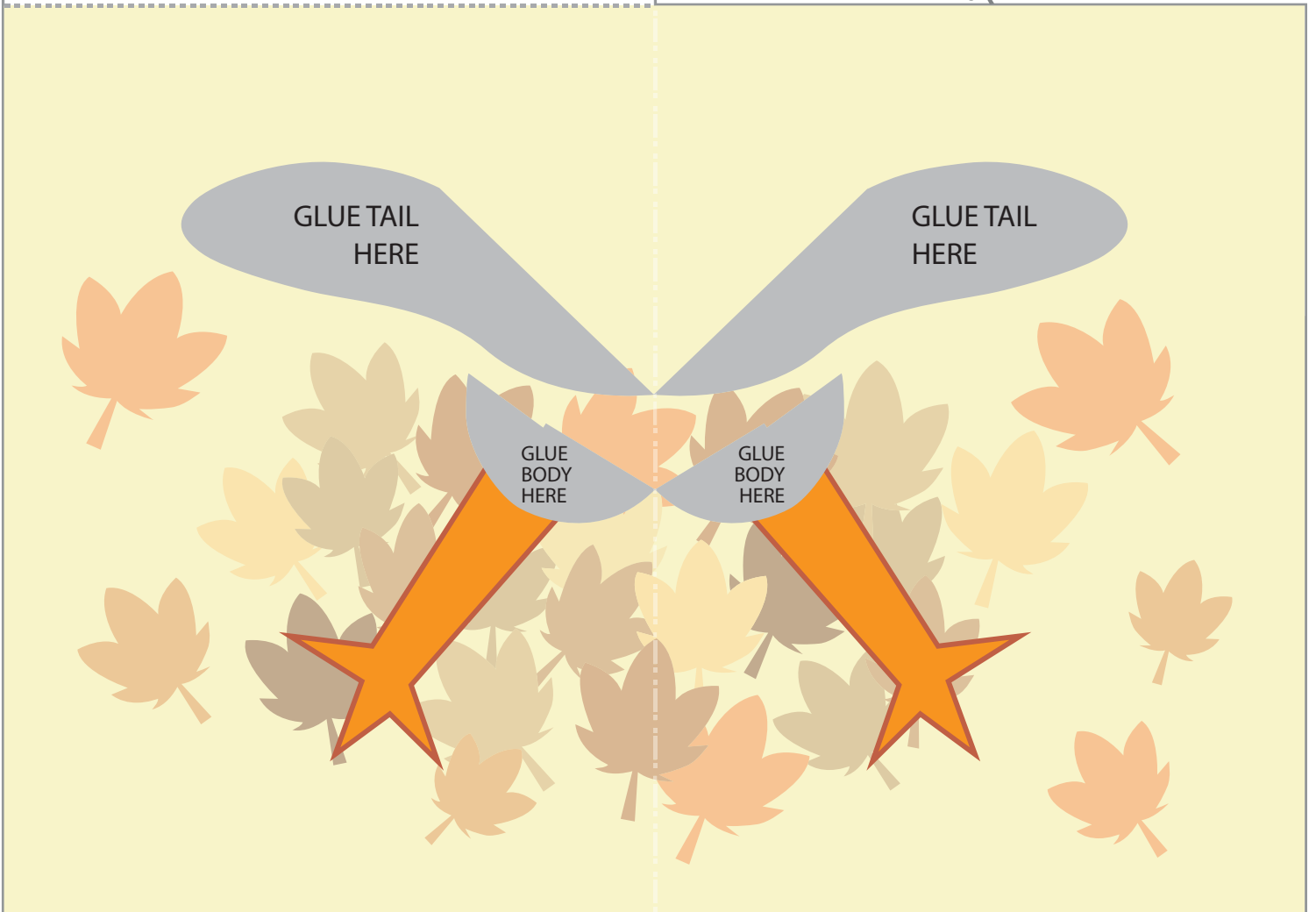


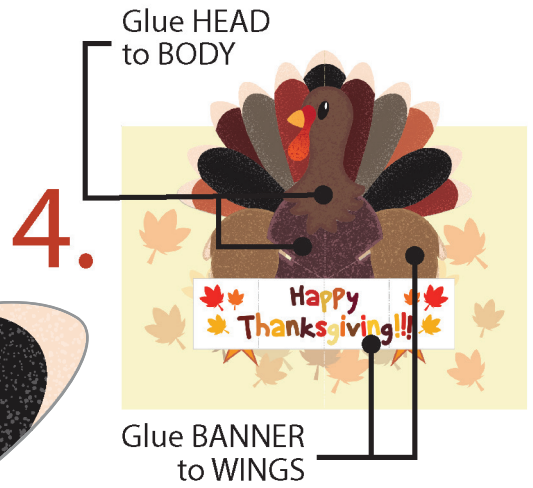
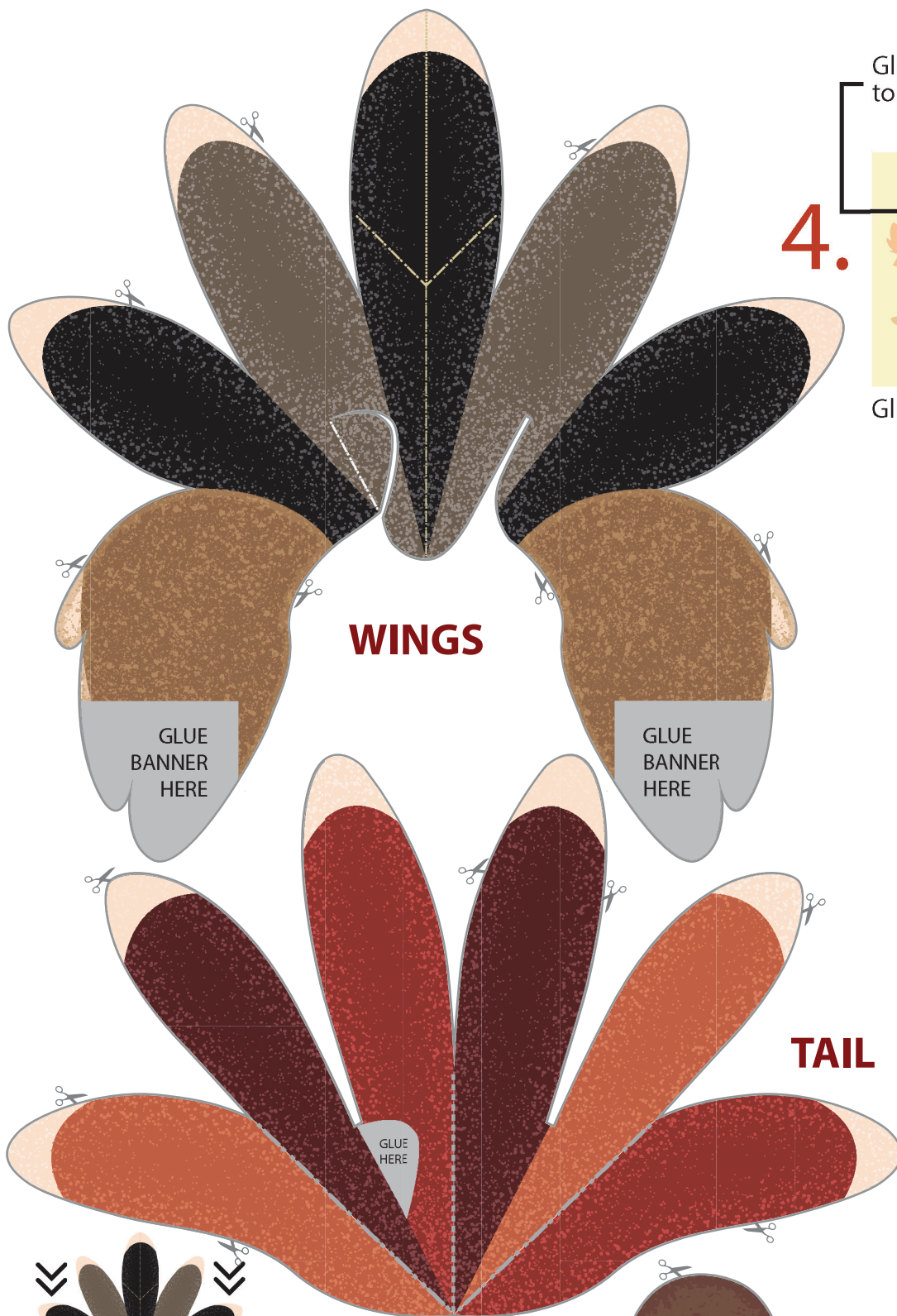
Glue TAIL
and BODY
to the BASE

2.

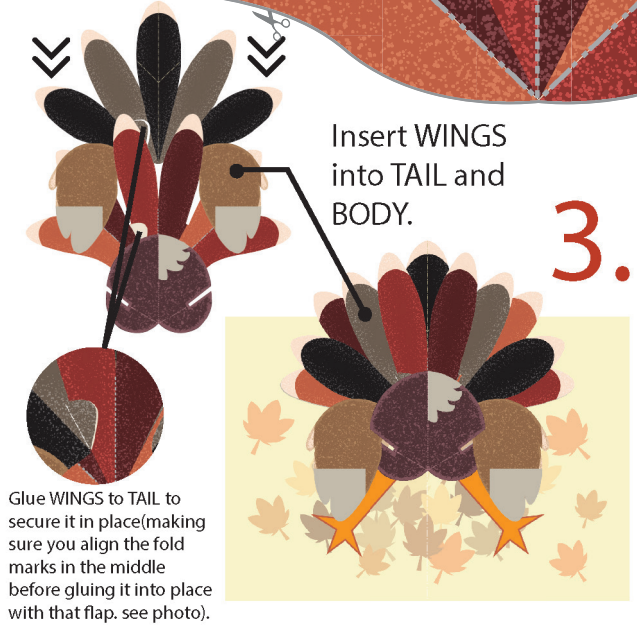


BASE





BANNER



Glue WINGS to TAIL to secure it in place (making sure you align the fold marks in the middle before gluing it into place with that flap, see photo).

