


HOME AT THE END OF THE RAINBOW POP-UP CARD


ASSEMBLY INSTRUCTIONS


 ———— Cut on this line

----- Fold on this line

● Apply glue

YOU WILL NEED:

 Scissors

 Glue



HOME AT THE END OF THE RAINBOW POP-UP CARD

INSTRUCTIONS:



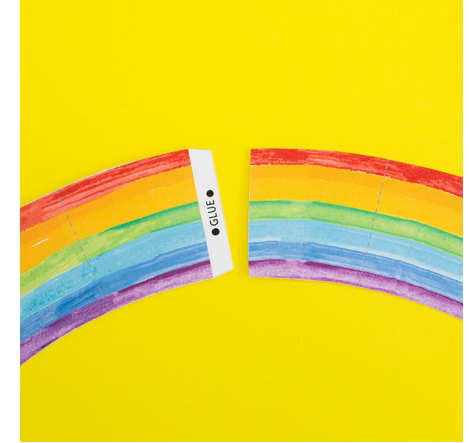
1. Print out page 3 on cardstock paper and print pages 4 and 5 on regular printer paper.
2. Cut out the cloud envelope and the 2 rainbow pieces.



3. Take the cloud envelope and fold on all the dash lines.



4. Apply glue to the side tabs and fold the bottom triangular piece up to create your envelope. Set aside to dry.



5. Take the 2 parts of the rainbow and glue together.



6. Fold the rainbow on all the dash lines accordian style, starting with a valley fold on the end without the house.



7. Glue the first section of the rainbow to the inside of the envelope. Make sure that when the rainbow is folded, it all fits inside when the envelope is closed.



8. Unfold and write your message!



9. Fold the rainbow back up and put inside the envelope.

